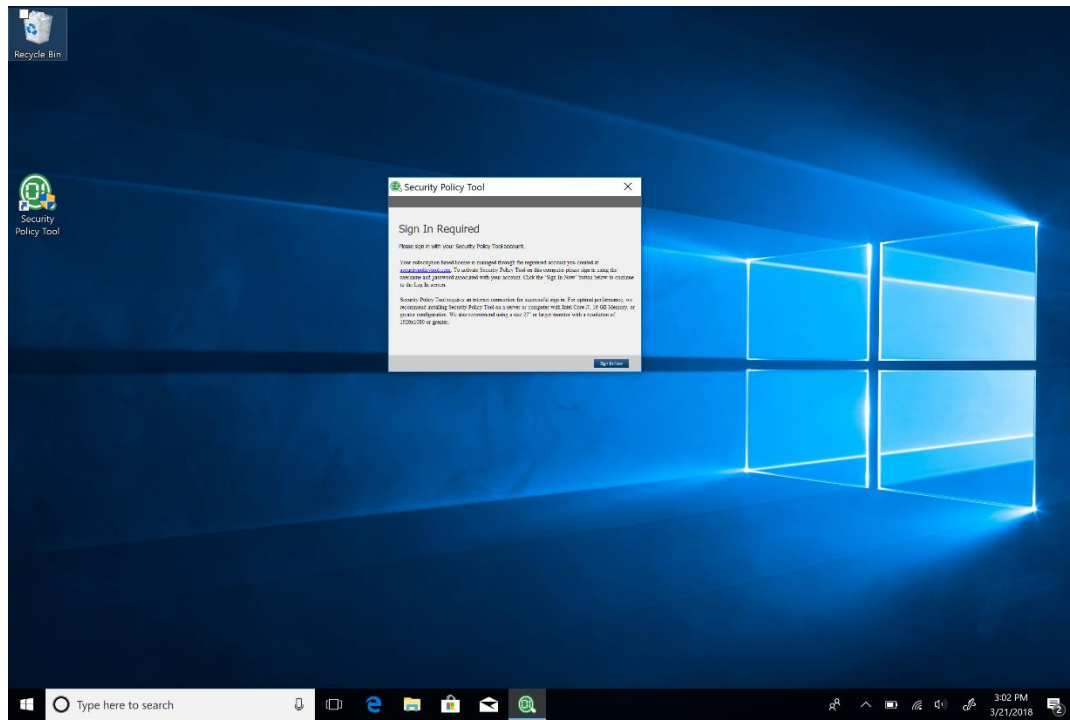
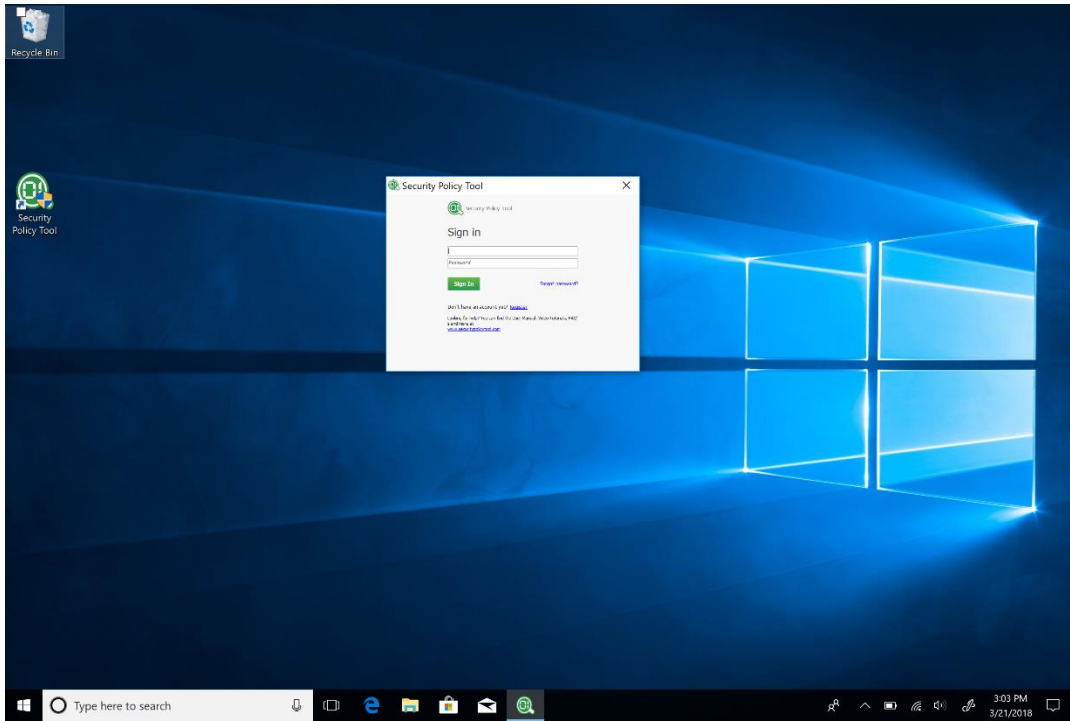


Why Security Policy Tool fonts appear very tiny on my laptop [High Resolution(4k) devices / Surface]?



Solution: Right click on the Security Policy Tool icon on desktop and click “Properties” to load properties window and click on “Compatibility” tab. Then Click “Override high DPI scaling behavior” Checkbox. And select “System” from the “Scaling performed by” dropdown menu. Finally Click “OK” to close the window and run Security Policy Tool executable to enjoy the software.

